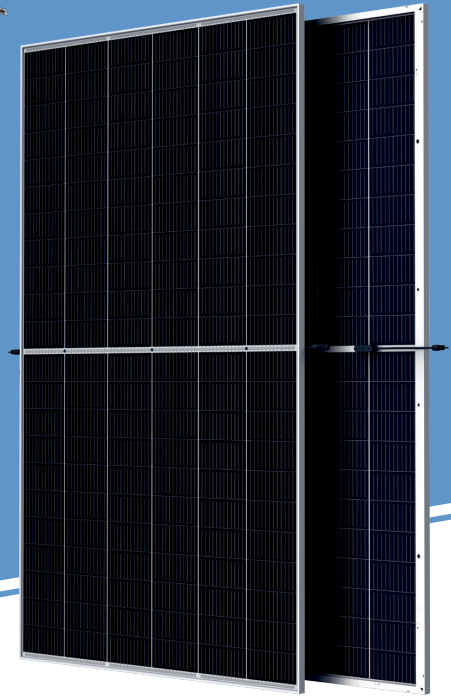


EvoSolar

by  Voxery



Evosolar NE-S144/M6H-BG

430-450W

BIFACIAL DUAL GLASS 144 LAYOUT MODULE

Product Advantages



High power

- Up to 450W front power and 20.7% module efficiency with half-cut and MBB (Multi Busbar) technology bringing more BOS savings
- Lower resistance of half-cut and good reflection effect of MBB ensure high power



High reliability

- Ensured PID resistance through cell process and module material control
- Resistant to salt, acid and ammonia
- Proven to be reliable in high temperature and humidity areas
- Certificated to fire class A
- Minimizes micro-crack and snail trails
- Mechanical performance: Up to 5400 Pa positive load and 2400 Pa negative load



High energy generation

- Up to 25% additional power gain from back side depending on the albedo ;
- Excellent IAM and low light performance validated by 3rd party with cell process and module material optimization
- Lower temp coefficient (-0.35%) and NMOT bring more energy leading to lower LCOE
- Better anti-shading performance and lower operating temperature



Easy to install

- Frame design makes module compatible with all racking and installation methods
- Easy to handle and install as normal framed module during transportation

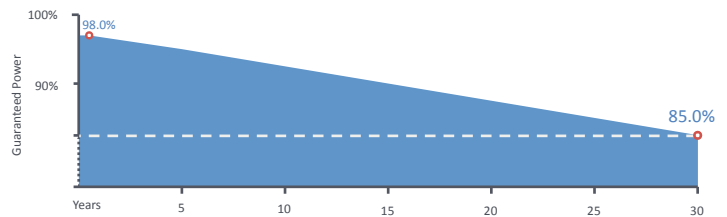
20.7%

Module efficiency

450W

Highest power output

Performance Warranty



-2.00%

First year power degradation

-0.45%

Annual degradation

15
Years

Materials and workmanship warranty

30
Years

Linear power warranty

Product Certification



Voxery

Quinta da Bergerie Prendedores 3660-068 CARVALHAIS SPS PORTUGAL

Web: www.voxerysolar.com

Email : info@voxerysolar.com

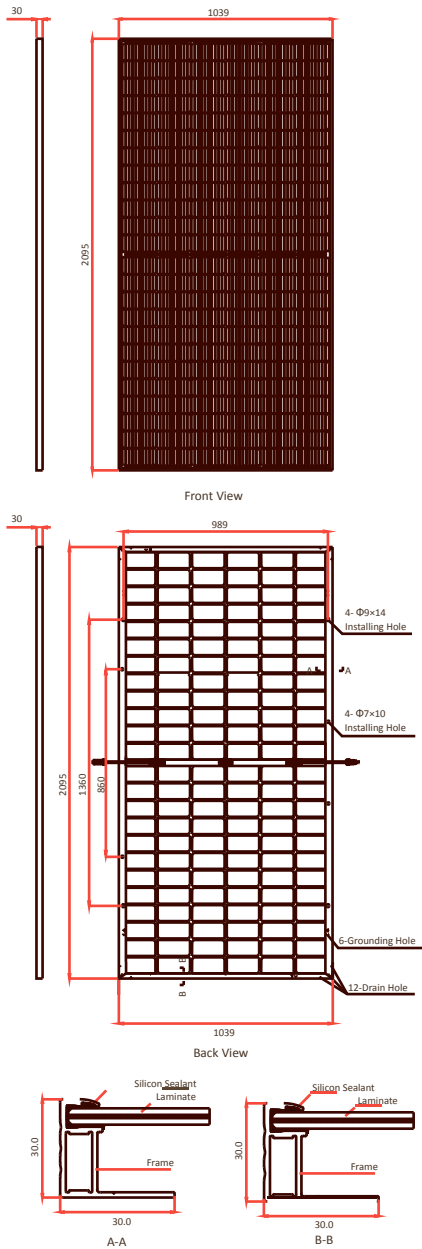
EvoSolar

by  Voxery

NE-S144/M6H-BG



DIMENSIONS OF PV MODULE(mm)



ELECTRICAL DATA (STC)

| Peak Power Watts-P _{MAX} (Wp)* | 430 | 435 | 440 | 445 | 450 |
|---|-------|-------|-------|-------|-------|
| Power Tolerance-P _{MAX} (W) | 0~+5 | | | | |
| Maximum Power Voltage-V _{MP} (V) | 40.5 | 40.8 | 41.1 | 41.4 | 41.7 |
| Maximum Power Current-I _{MP} (A) | 10.62 | 10.67 | 10.71 | 10.75 | 10.80 |
| Open Circuit Voltage-V _{OC} (V) | 48.7 | 48.9 | 49.1 | 49.3 | 49.5 |
| Short Circuit Current-I _{SC} (A) | 11.20 | 11.29 | 11.37 | 11.45 | 11.53 |
| Module Efficiency η _m (%) | 19.7 | 20.0 | 20.2 | 20.4 | 20.6 |

STC: Irradiance 1000W/m², module temperature 25°C, AM=1.5; *Measuring tolerance: ±3%

Electrical characteristics with different rear side power gain (reference to 435 Wp front)

| Maximum Power-P _{MAX} (Wp) | 457 | 479 | 500 | 522 | 544 |
|---|-------|-------|-------|-------|-------|
| Maximum Power Voltage-V _{MP} (V) | 40.8 | 40.8 | 40.8 | 40.8 | 40.8 |
| Maximum Power Current-I _{MP} (A) | 11.20 | 11.74 | 12.27 | 12.80 | 13.34 |
| Open Circuit Voltage-V _{OC} (V) | 49.0 | 49.1 | 49.2 | 49.3 | 49.4 |
| Short Circuit Current-I _{SC} (A) | 11.80 | 12.36 | 12.93 | 13.49 | 14.05 |
| P _{max} gain | 5% | 10% | 15% | 20% | 25% |

Power Bifaciality: 70±5%

ELECTRICAL DATA (NMOT)

| Maximum Power-P _{MAX} (Wp) | 325 | 329 | 333 | 337 | 341 |
|---|------|------|------|------|------|
| Maximum Power Voltage-V _{MP} (V) | 38.2 | 38.5 | 38.8 | 39.0 | 39.1 |
| Maximum Power Current-I _{MP} (A) | 8.51 | 8.55 | 8.58 | 8.63 | 8.71 |
| Open Circuit Voltage-V _{OC} (V) | 46.0 | 46.2 | 46.4 | 46.6 | 46.7 |
| Short Circuit Current-I _{SC} (A) | 9.02 | 9.05 | 9.08 | 9.12 | 9.15 |

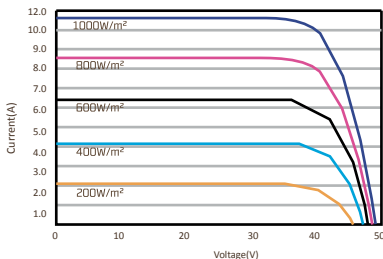
NMOT: Irradiance 800W/m², module temperature 20°C, AM=1.5, wind speed 1m/s

MECHANICAL DATA

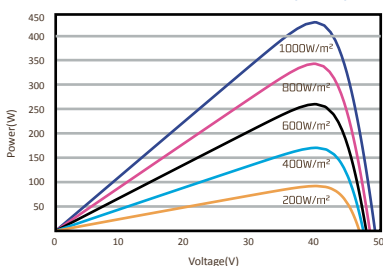
| | |
|----------------------|--|
| Solar Cells | Monocrystalline silicon 166 mm (9BB) |
| Cell Orientation | 144 cells (6 x 24) |
| Module Dimensions | 2095x1039x30 mm |
| Weight | 28.5 kg |
| Front Glass | 2.0 mm , High Transmission, AR Coated Heat Strengthened Glass |
| Encapsulant material | POE/EVA |
| Back Glass | 2.0 mm , Heat Strengthened Glass (White Grid Glass) |
| Frame | 30mm Anodized Aluminium Alloy |
| Junction Box | IP 68 rated |
| Cables | Photovoltaic Technology Cable 4.0mm ² Cable length 350mm or customized length |

*Please refer to regional datasheet for specied connector.

I-V CURVES OF PV MODULE(440W)



P-V CURVES OF PV MODULE(440W)



TEMPERATURE RATINGS

| | |
|---|------------|
| NMOT (Nominal Module Operating Temperature) | 41°C(±3°C) |
| Temperature Coefficient of P _{MAX} | - 0.34%/°C |
| Temperature Coefficient of V _{OC} | - 0.25%/°C |
| Temperature Coefficient of I _{SC} | 0.040%/°C |

(Do not connect Fuse in Combiner Box with two or more strings in parallel connection)

MAXIMUM RATINGS

| | |
|-------------------------|----------------|
| Operational Temperature | -40~+85°C |
| Maximum System Voltage | 1500V DC (IEC) |
| Max Series Fuse Rating | 20A |

PACKAGING CONFIGURATION

| |
|---------------------------------------|
| Modules per box: 35 pieces |
| Modules per 40' container: 770 pieces |

Voxery

Quinta da Bergerie Prendedores 3660-068 CARVALHAIS SPS PORTUGAL

Web: www.voxerysolar.com

Email : info@voxerysolar.com

EvoSolar

By Voxery